

1

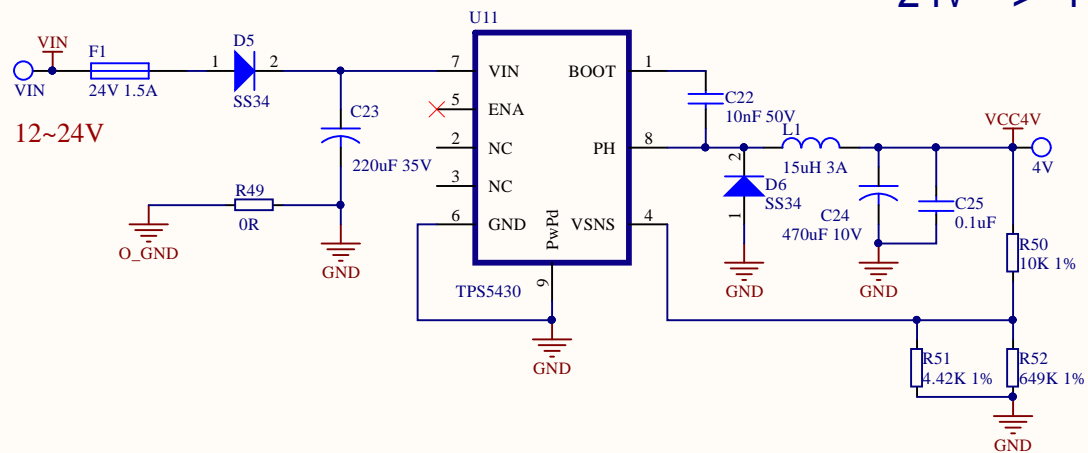
2

3

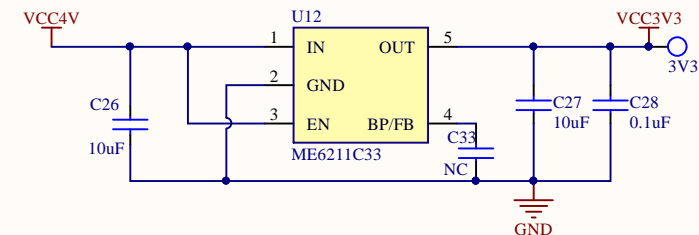
4

A

A



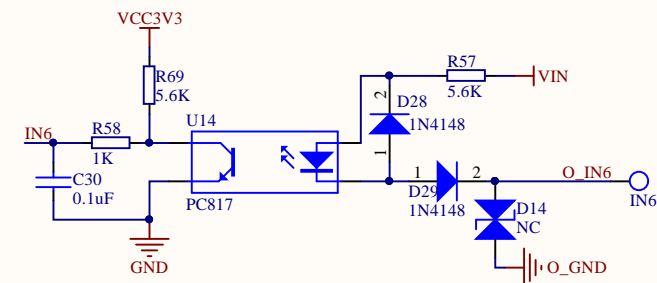
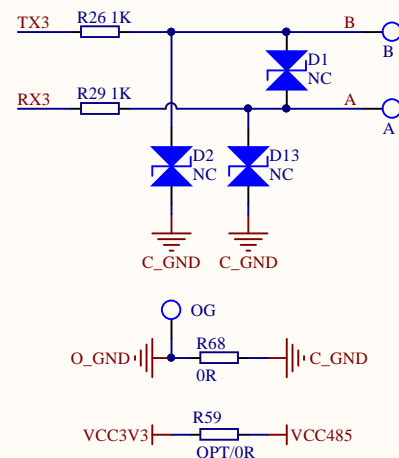
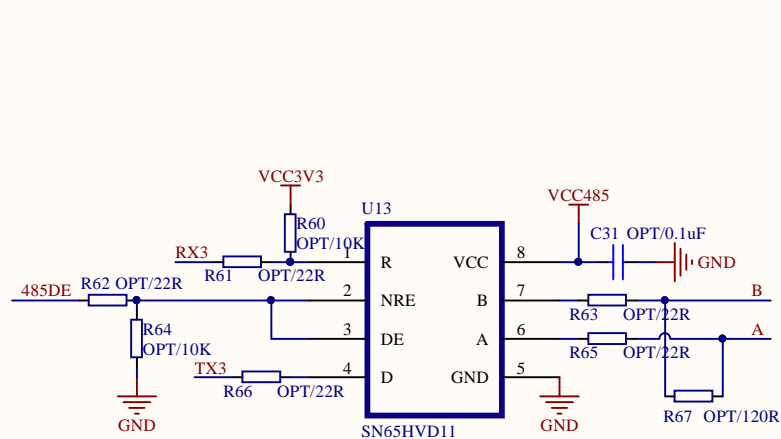
4V -> 3.3V



RS485 or UART

C

C



Title		
Size	Number	Revision
A4		
Date:	2019/7/23	Sheet of
File:	F:\GizwitsHw\...\Power-COM.SchDoc	Drawn By:

1

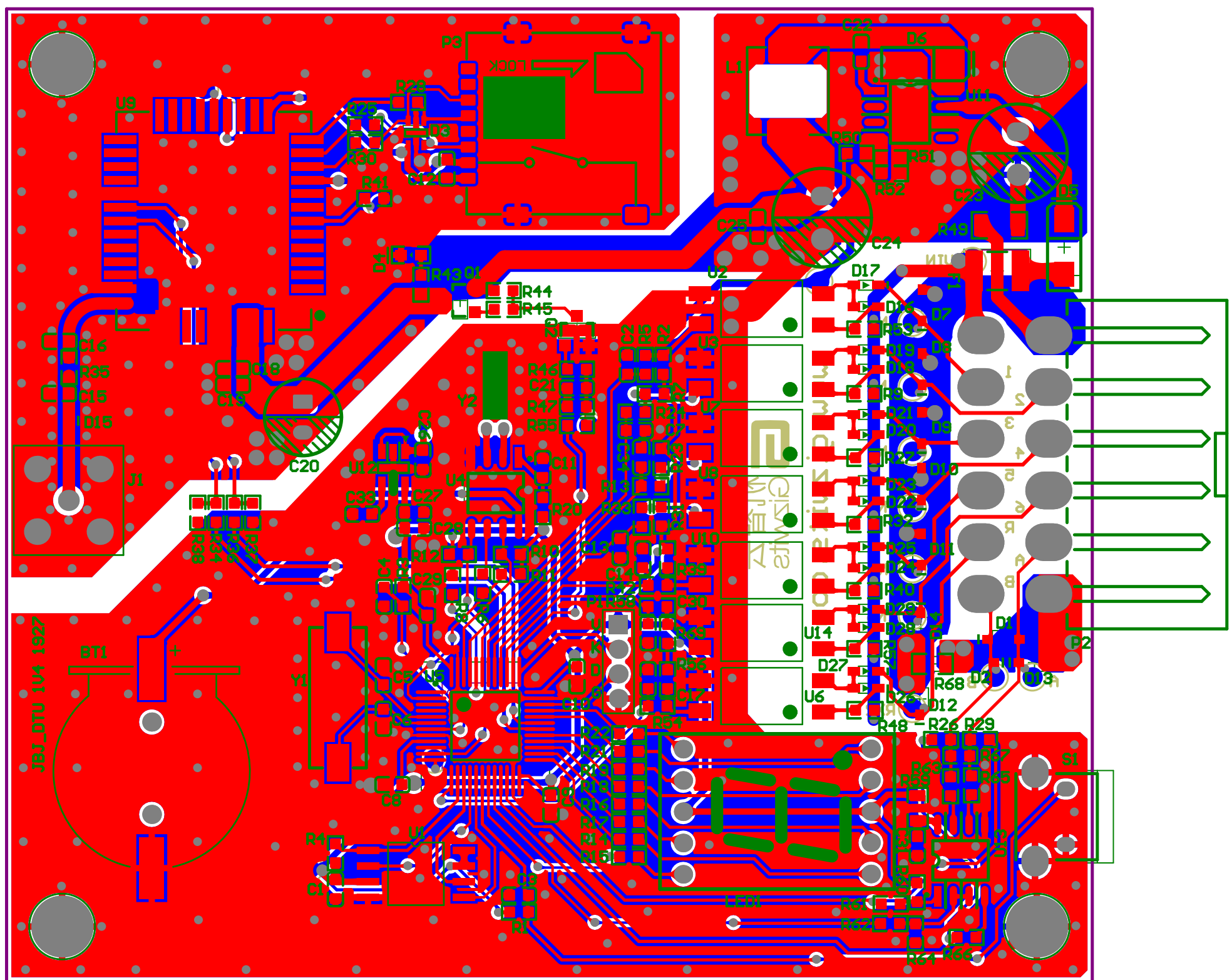
2

3

4

D

D



Comment	Description	Designator	Footprint	LibRef	Quantity
TP		3V3, 4V, A, B, G, RXD, G, TXD, GND, IN1, IN2, IN3, IN4, IN5, IN6, MPWR, OG, PK, 2X2, TX2, VIN	TP_0	TP	19
CR1220 电池座	Multicell Battery	BT1	CR1220_W	Battery	1
0.1uF	[NoValue], X7R XSR	C1, C2, C3, C4, C8, C9, C10, C11, C12, C14, C17, C18, C25, C28, C29, C30, C34	0603-C	CAPN	17
22pF		C5, C6	0603-C	CAPN	2
OPT/0.1uF		C7, C13, C31	0603-C	CAPN	3
NC	[NoValue], 无极性电容	C15, C16, C21, C33	0603-C	CAPN	4
10uF		C19, C26, C27	0603-C	CAPN	3
470uF 6.3V	固态电容	C20	CAP_6.3-2.5	CAP	1
10nF 50V	无极性电容	C22	0603-C	CAPN	1
220uF 35V	极性电容	C23	CAP_8-3.5	CAP	1
470uF 10V	极性电容	C24	CAP_8-3.5	CAP	1
NC		D1, D2, D7, D8, D9, D10, D11, D12, D13, D14, D15	SOD323	TVS	11
LESDA6V8AWST1G		D3	SOT353	LESDA6V8AWST1G	1
LED		D4	LED_0603_M	LED	1
SS34	二极管	D5, D6	DO214_SMA_M	DONE	2
1N4148	二极管	D16, D17, D20, D21, D24, D25, D26, D27, D28, D29	SOD523	DONE	10
OPT/1N4148	二极管	D18, D19, D22, D23	SOD523	DONE	4
24V 1.5A	Fuse	F1	I812	Fuse 1	1
RF	SMA天线座	J1	SMA_KWE	MHDR1X2	1
15uH 3A	电感	L1	SMD_7.1x6.6mm	IND	1
FJ5161BH		LED1	LEDSEG_1_0.56_A NODE	LEDSEG_FJ5161BH	1
2.0MM 4P	Header, 4-Pin	P1	PH2MMX4	Header 4	1
MX4.2mm 2X6P	Header, 6-Pin, Dual row, Right Angle	P2	MX4.2mm 2x6P	Header 6X2H	1
SIM-S81-1B08F15A		P3	SIM-S81-1B08F15A	SIM-S81-1B08F15A	1
AO3401		Q1	SOT23_3_N	MOS_P	1
MMBT3904		Q2	SOT23_3_N	MMBT3904	1
3.3K		R1	0603-R	RES_S	1
5.6K		R2, R23, R27, R37, R38, R39, R40, R48, R53, R56, R57, R69	0603-R	RES_S	12
10K		R3, R4, R8, R44	0603-R	RES_S	4
1K		R5, R6, R13, R14, R15, R16, R17, R18, R19, R20, R21, R22, R26, R29, R34, R36, R42, R43, R45, R46, R47, R54, R55, R58	0603-R	RES_S	24
OPT/5.6K		R7, R9, R31, R32	0603-R	RES_S	4
4.7K		R10, R11, R12	0603-R	RES_S	3
OPT/1K		R24, R33	0603-R	RES_S	2
22R		R25, R28, R30	0603-R	RES_S	3
0R		R35	0603-R	RES_S	1
470R		R41	0603-R	RES_S	1
0R	电阻 120R PZ3216U121-3R0TF	R49	1206-R	RES_S	1
10K 1%		R50	0603-R	RES_S	1
4.42K 1%		R51	0603-R	RES_S	1
649K 1%		R52	0603-R	RES_S	1
OPT/0R		R59	0805-R	RES_S	1
OPT/10K		R60, R64	0603-R	RES_S	2
OPT/22R		R61, R62, R63, R65, R66	0603-R	RES_S	5
OPT/120R		R67	0603-R	RES_S	1
0R		R68	0805-R	RES_S	1
SW2		S1	SW_6x6x5	SW2	1
EARTH		TH1, TH2, TH3, TH4	ETH-3MM	TP	4
W25X16		U1	SOP8_M_W	W25X16	1
PC817	4-Pin Phototransistor Optocoupler	U2, U6, U7, U10, U14	SOP4	Optoisolator1	5
OPT/PC817	4-Pin Phototransistor Optocoupler	U3, U8	SOP4	Optoisolator1	2
DS1302ZN		U4	SOIC_8	DS1302ZN	1
STM32F103C8T6	STM32 ARM-based 32-bit MCU with 64 Kbytes Flash, 48-pin LQFP, Industrial Temperature	U5	LOFP48_N	STM32F103C8T6	1
BC26		U9	BC26-44 17.7*15.8MM	BC26	1
TP55430		U11	PSOP-8	TP55430	1
ME6211C33		U12	SOT23_5_HV	LDO_SGM2019	1
SN65HVD11		U13	SOP-8	SN65HVD11	1
8M		Y1	XTAL_SMD_49S	Y2	1
32.768kHz 6pF		Y2	XTAL-D2X6	Y3	1